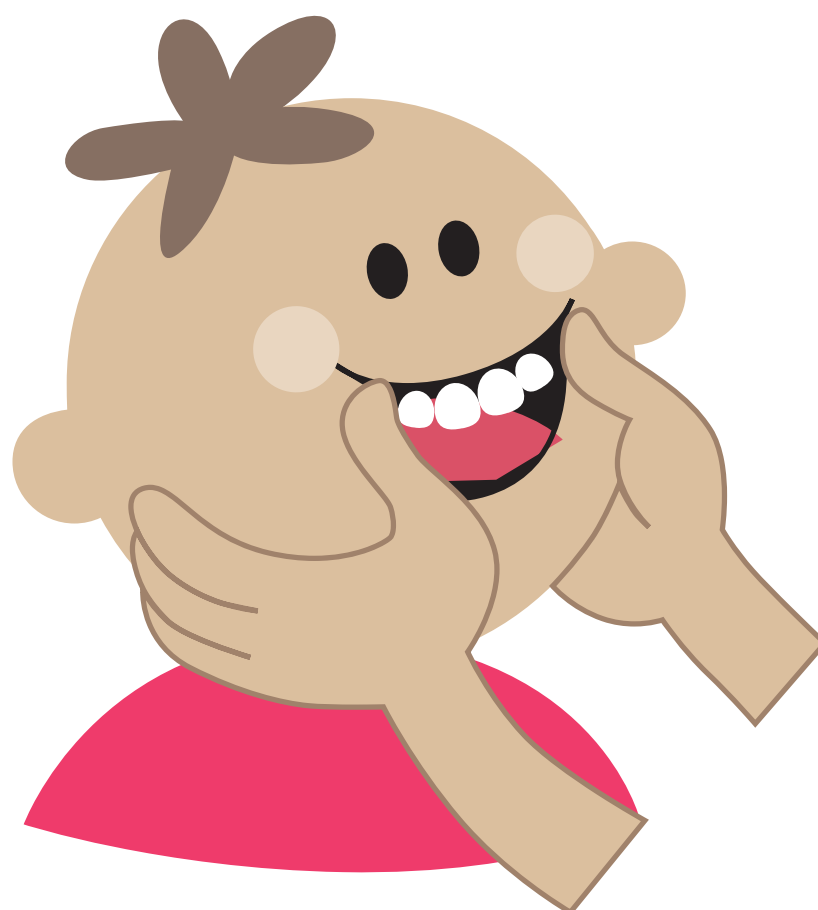


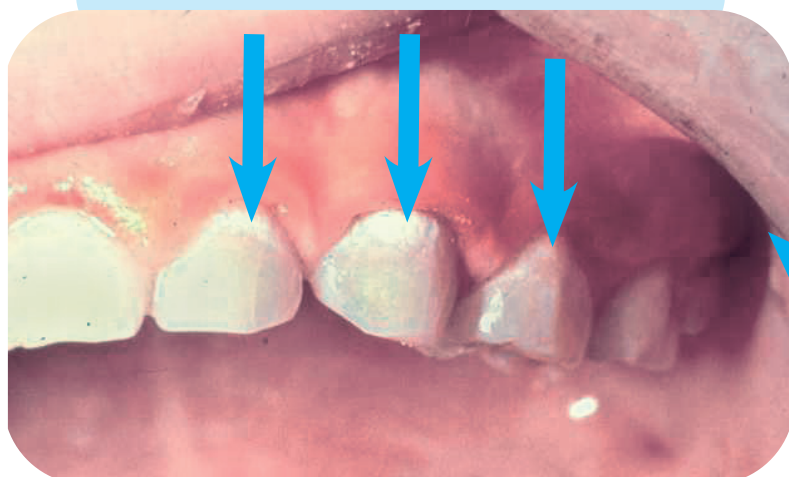


Lift the lip to check for decay

Healthy teeth:



Early signs of decay:



White lines along the gums.
This can be reversed.

More advanced decay:



Can look like brown spots on the teeth.
If left untreated, decay can quickly become severe, causing pain and infection.

Lift your child's top lip at least once a month and check for early signs of tooth decay.

If you notice any change in your child's teeth please seek dental advice.

For more information contact your dental clinic or Dental Health Services on 9313 0555 Alternatively visit www.dental.wa.gov.au

